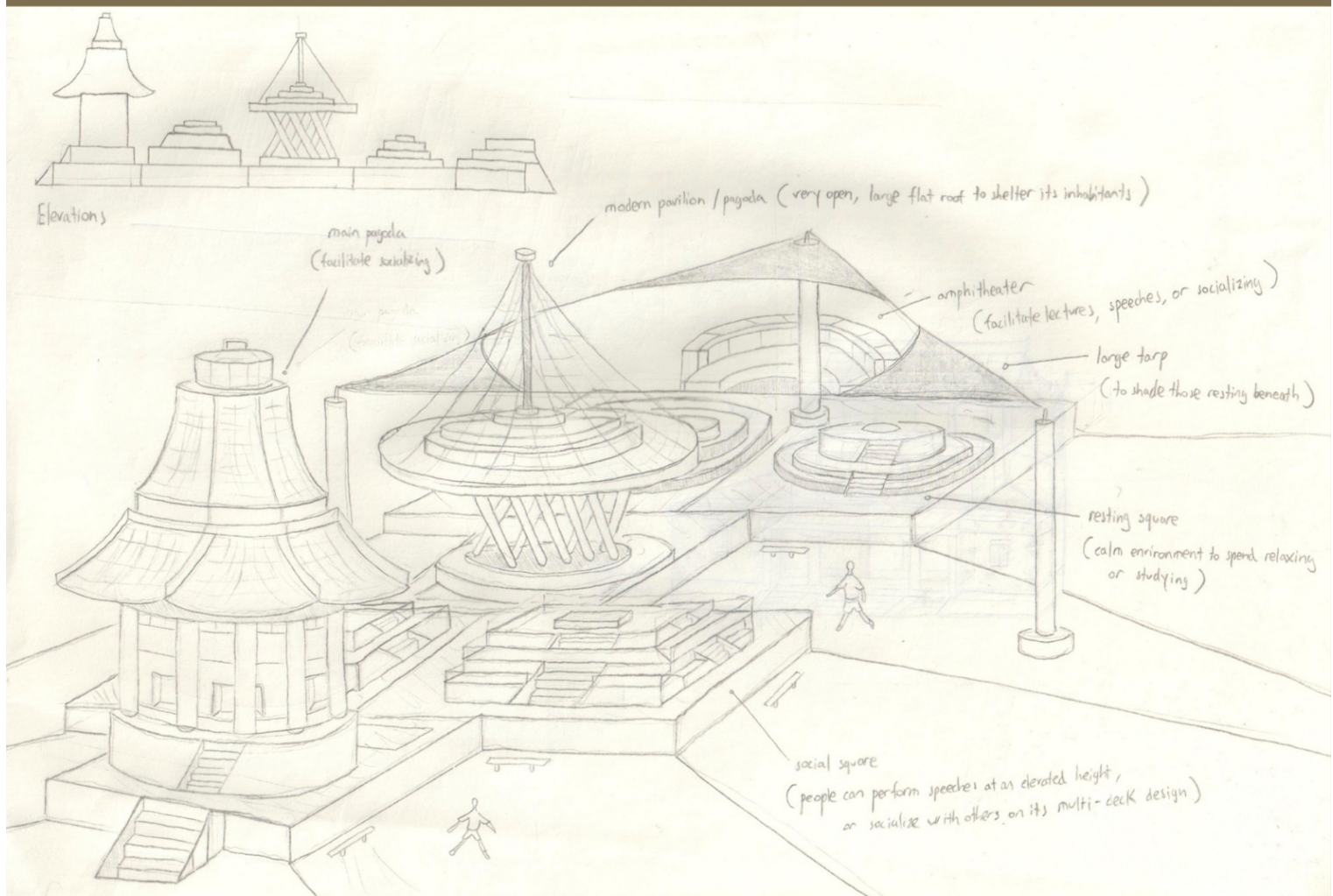


PAVILION DESIGN

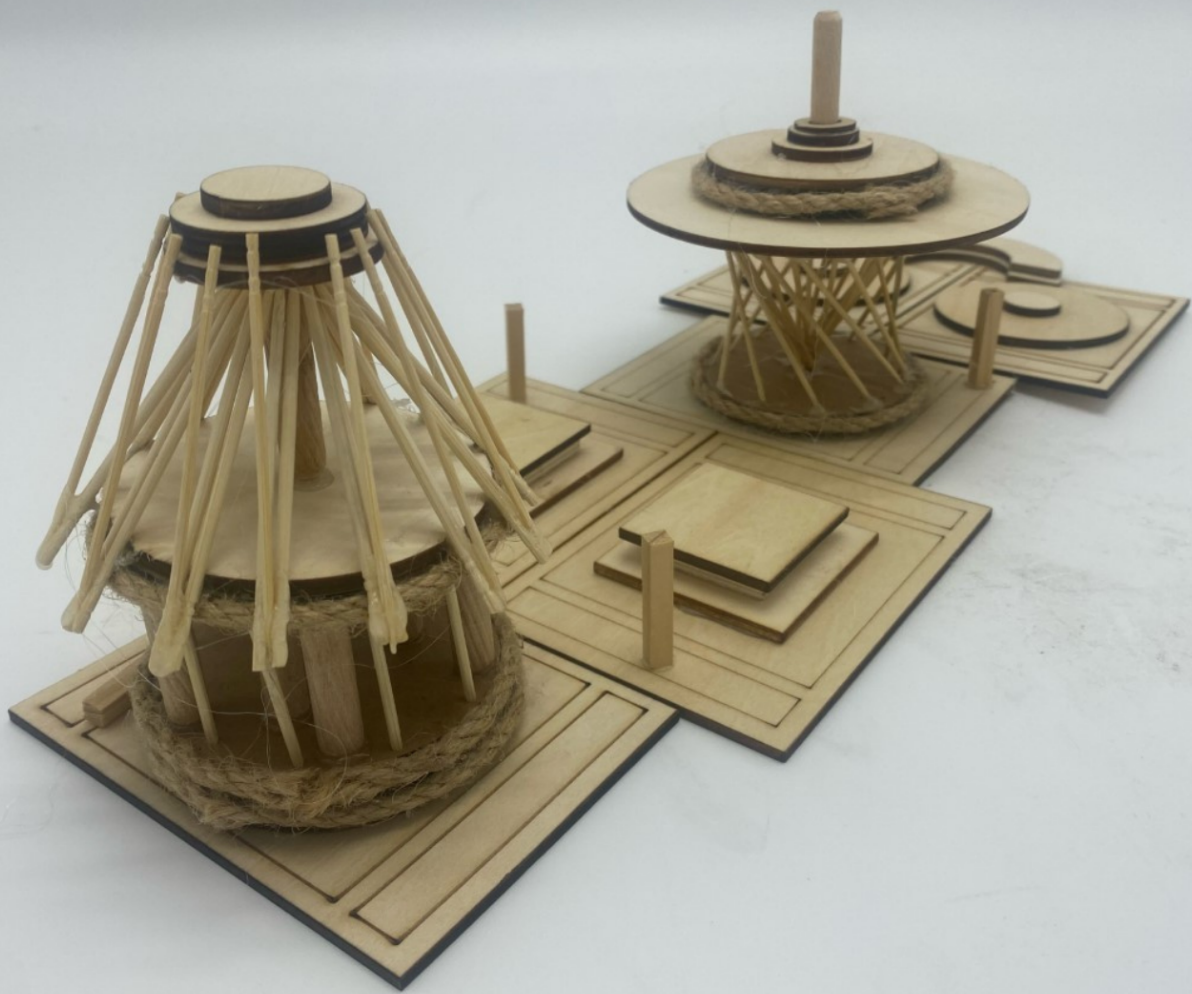
TRADITIONAL PAGODA

A PAVILION CONSTRUCTED TO FACILITATE SOCIAL INTERACTION, STUDY, AND SHELTER



THIS PAVILION WAS CONSTRUCTED TO PROVIDE A SENSE OF PEACE TO STUDENTS WITHIN THEIR INDUSTRIOUS SCHOOL SURROUNDINGS, MADE PRIMARILY TO RELIEVE STRESS, ALTHOUGH IT ALSO ALLOWS STUDENTS TO SOCIALIZE AND CONDUCT LARGE EVENTS.

THE PAVILION IS ALSO CAPABLE OF SHELTERING STUDENTS FROM ENVIRONMENTAL EFFECTS LIKE RAIN OR INTENSE HEAT.



THIS PAVILION IS COMPOSED OF A CENTRAL PAGODA, FOLLOWED BY TWO ELEVATED SQUARE PODIUMS, A SECOND, MODERN PAGODA, AND FINALLY TWO CIRCULAR SITTING PLATFORMS, ACCOMPANIED BY AN AMPHITHEATER.

ALTHOUGH THESE AREN'T PRESENT WITHIN THE SCALE MODEL, THERE ARE 3 SUPPORT PILLARS WHICH DRAPE TARPS OVER THE PAVILION, PROVIDING SHADE TO THOSE BELLOW.

THE CENTRAL PAGODA WAS CONSTRUCTED TO FACILITATE REST AND STUDY, ITS WALLS ARE SEALED TO INSULATE SOUND AND TEMPERATURE. STUDENTS INSIDE CAN WORK OR RELAX IN SILENT, COMFORTABLE CONDITIONS.

THE SECOND PAGODA WAS BUILT WITH A DIFFERENT ETHOS, TO FACILITATE SOCIAL INTERACTION, AND REMAIN AS OPEN AS POSSIBLE, ALLOWING PEOPLE AND SOUND TO FLOW THROUGH, ALTHOUGH REPELLING RAIN AND SUNSHINE.

THE PODIUMS, PLATFORMS AND AMPHITHEATER WERE CONSTRUCTED FOR SIMILAR PURPOSES, TO HOLD STUDENT EVENTS. THESE BUILDINGS CAN HOST SPEECHES, PLAYS OR SOCIAL EVENTS IN LARGE OPEN SPACES, IN SOME WAYS MORE COMFORTABLE THAN THE CONFINED ROOMS THAT ISB UTILIZES TO CONDUCT IT'S EVENTS.